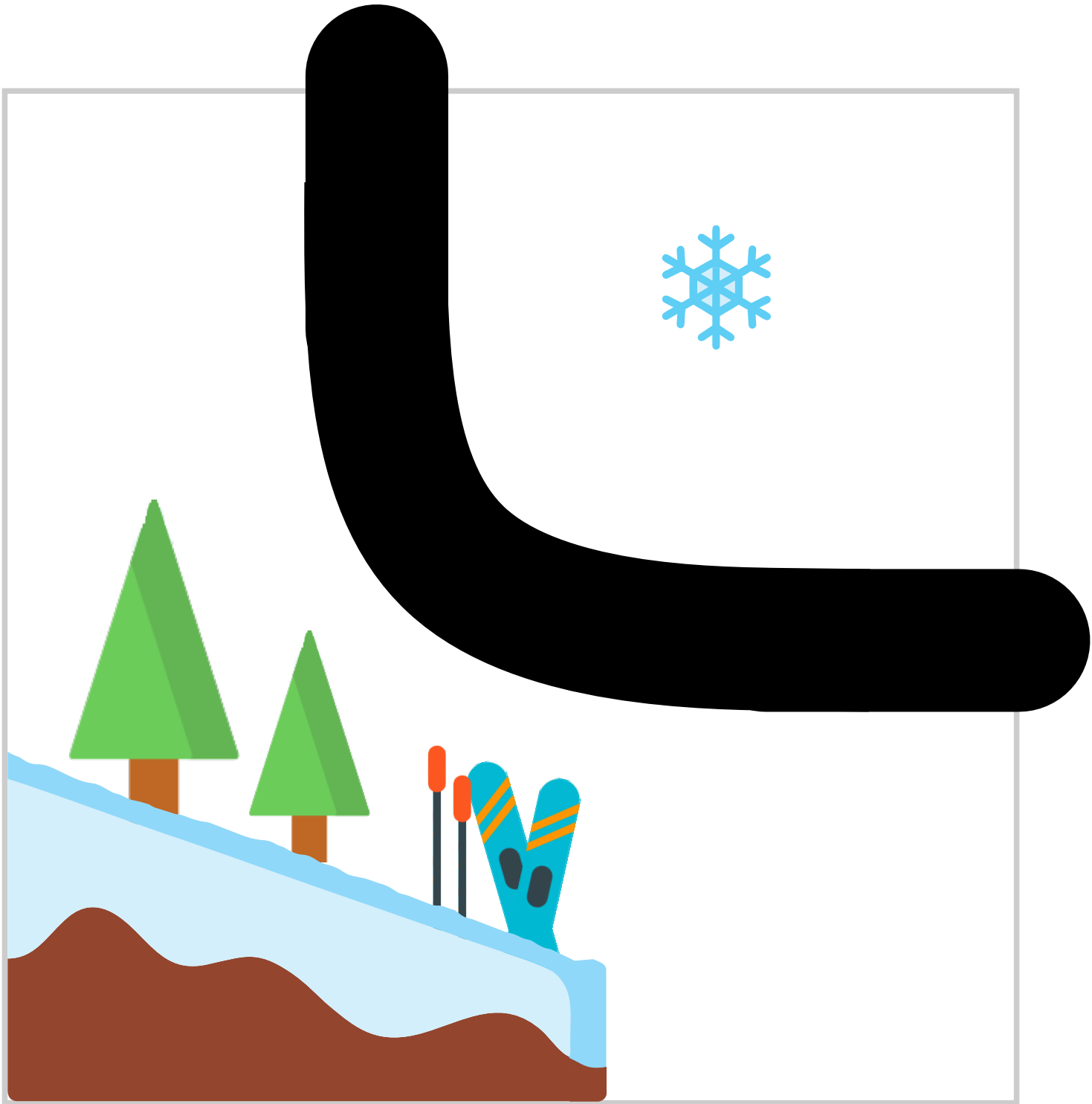


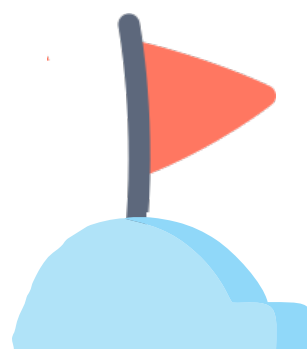
CILJ

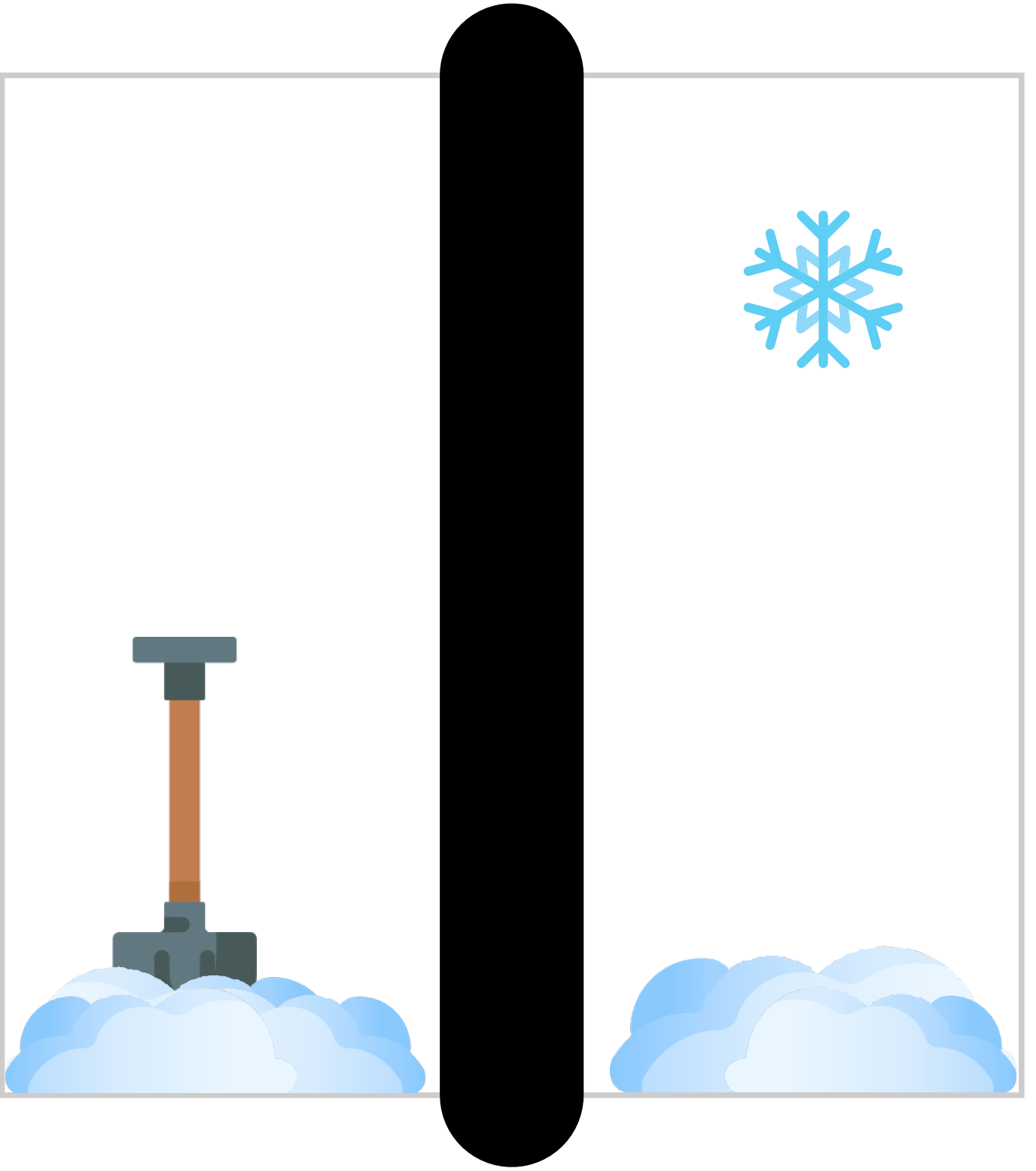


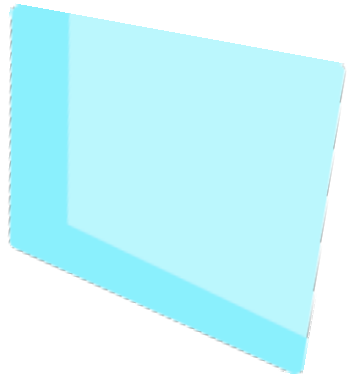
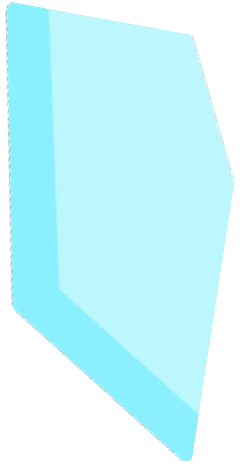
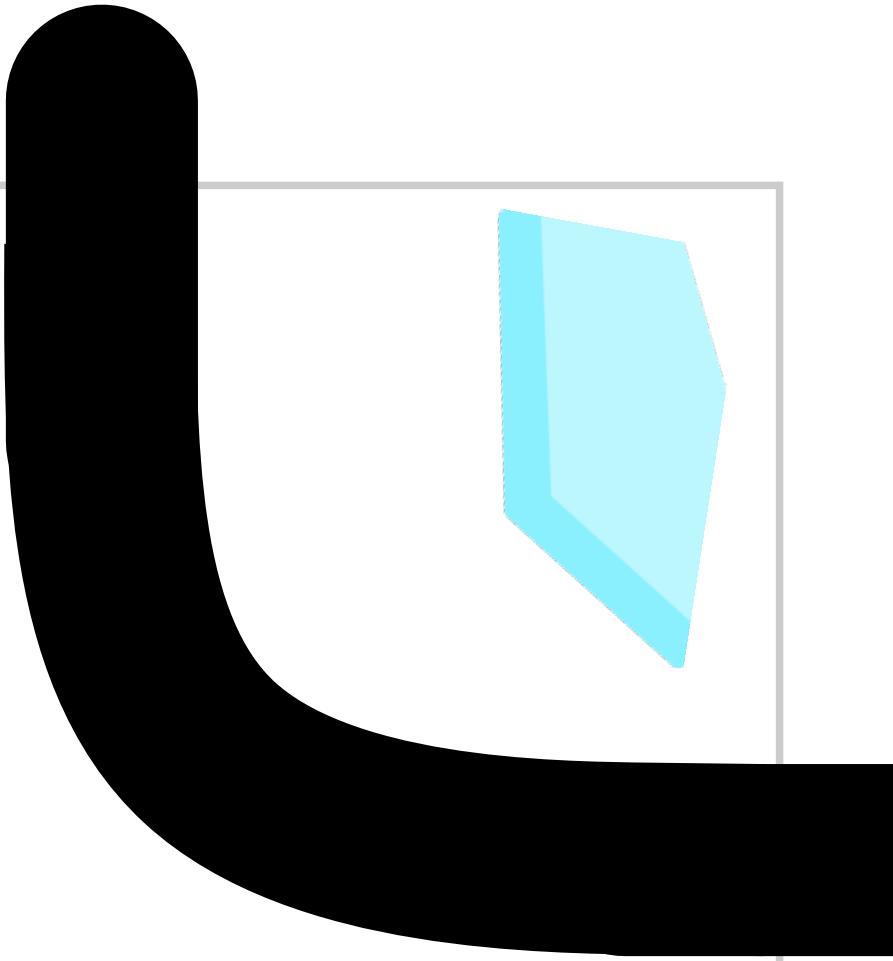


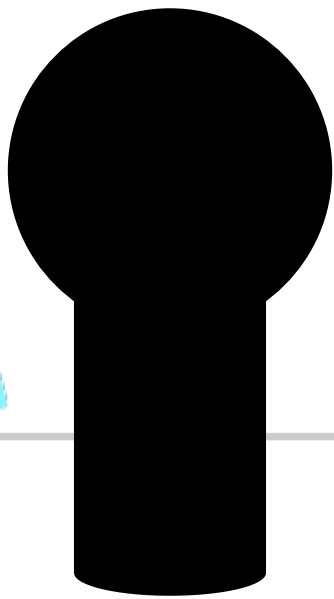
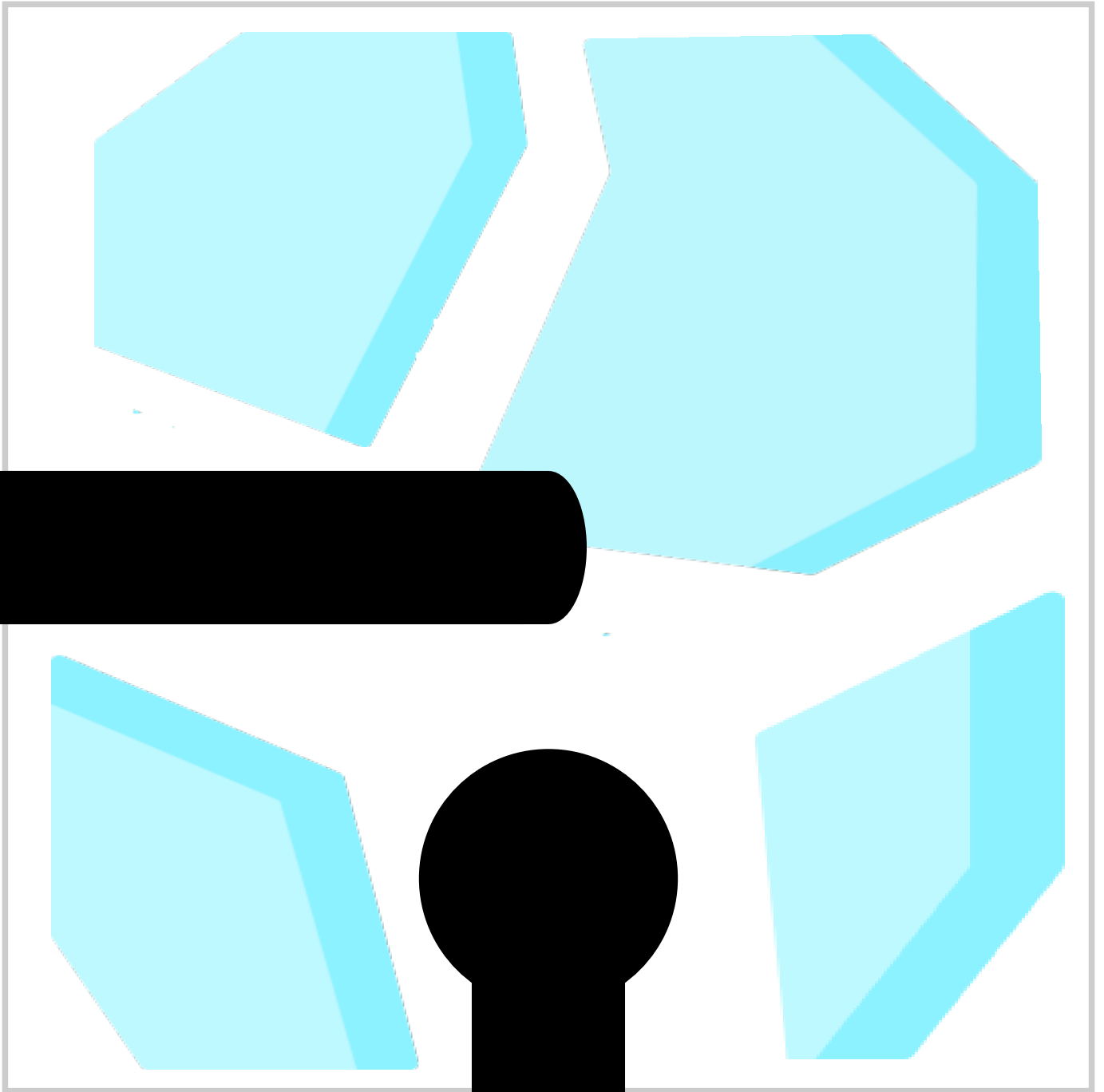


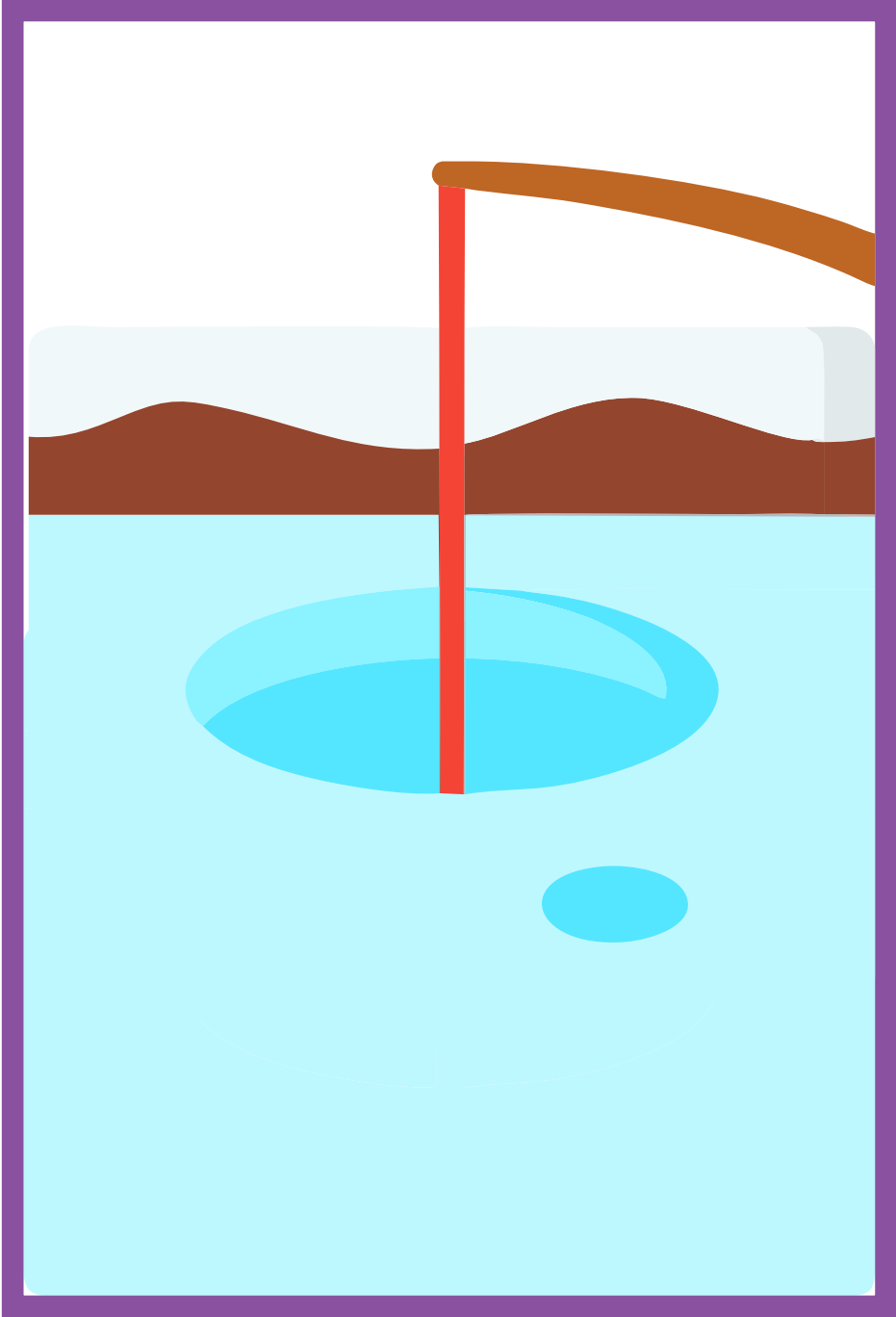
**CROATIAN
MAKERS**

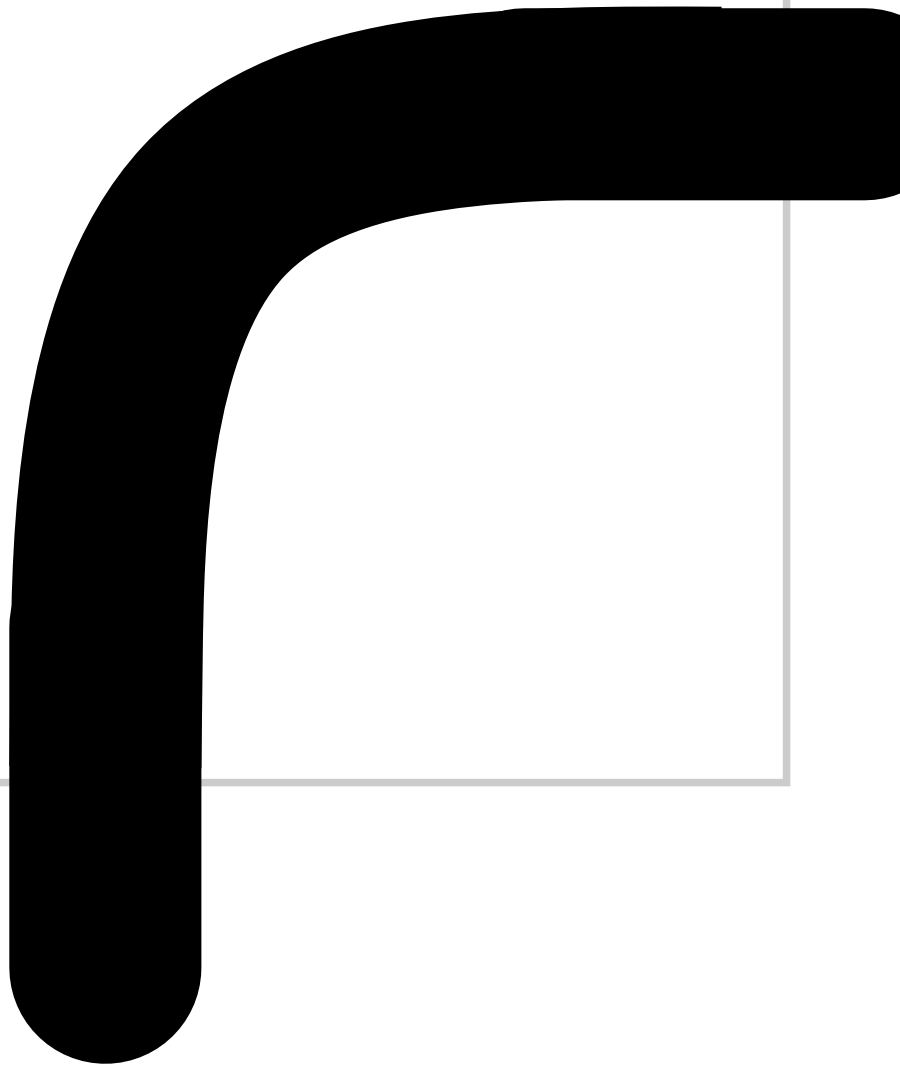
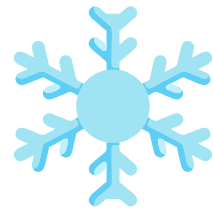
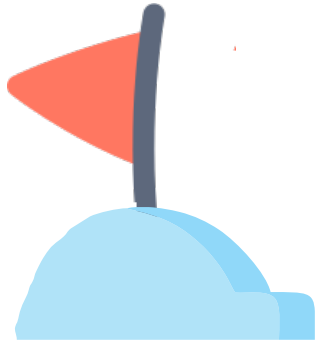


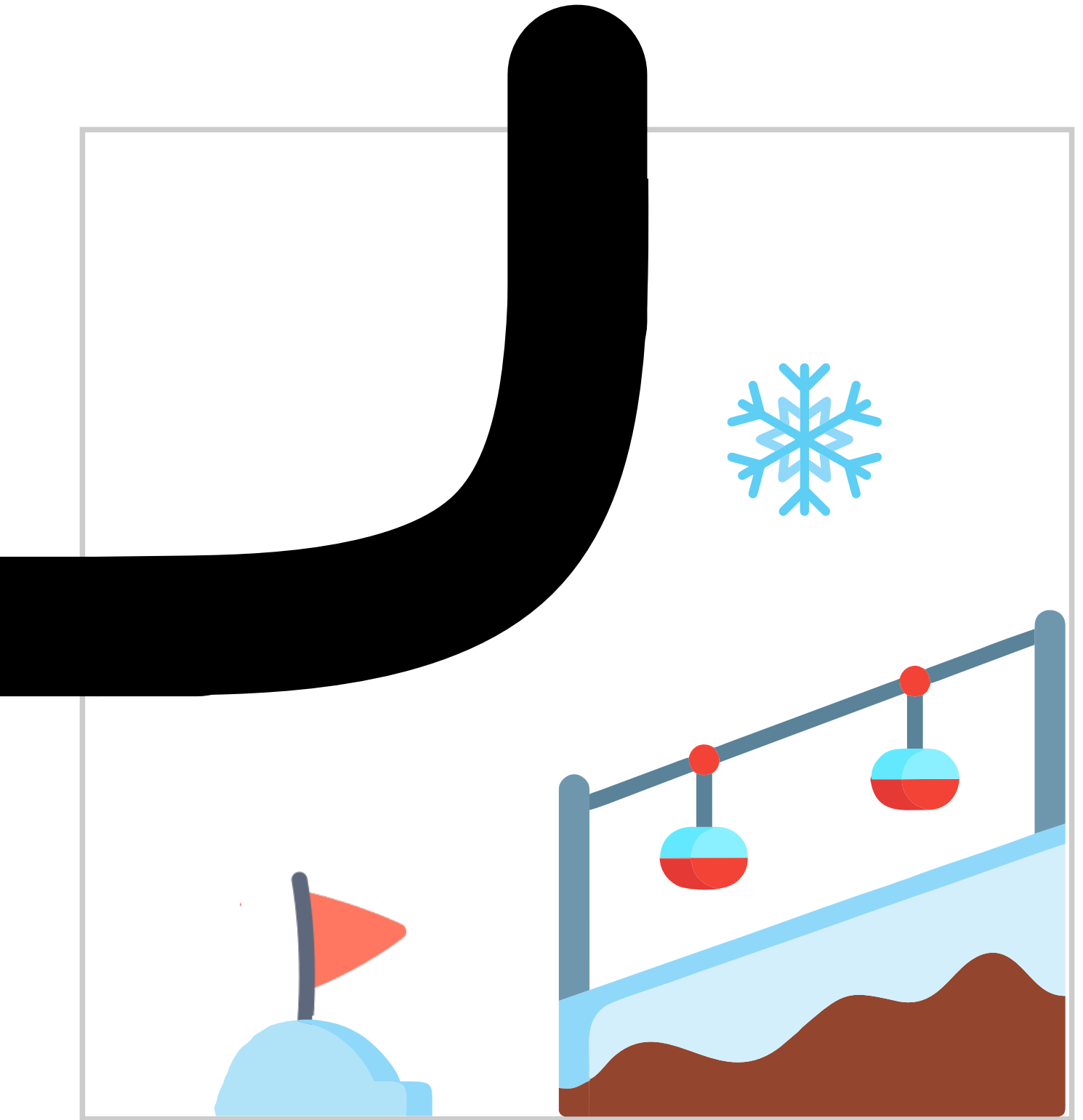


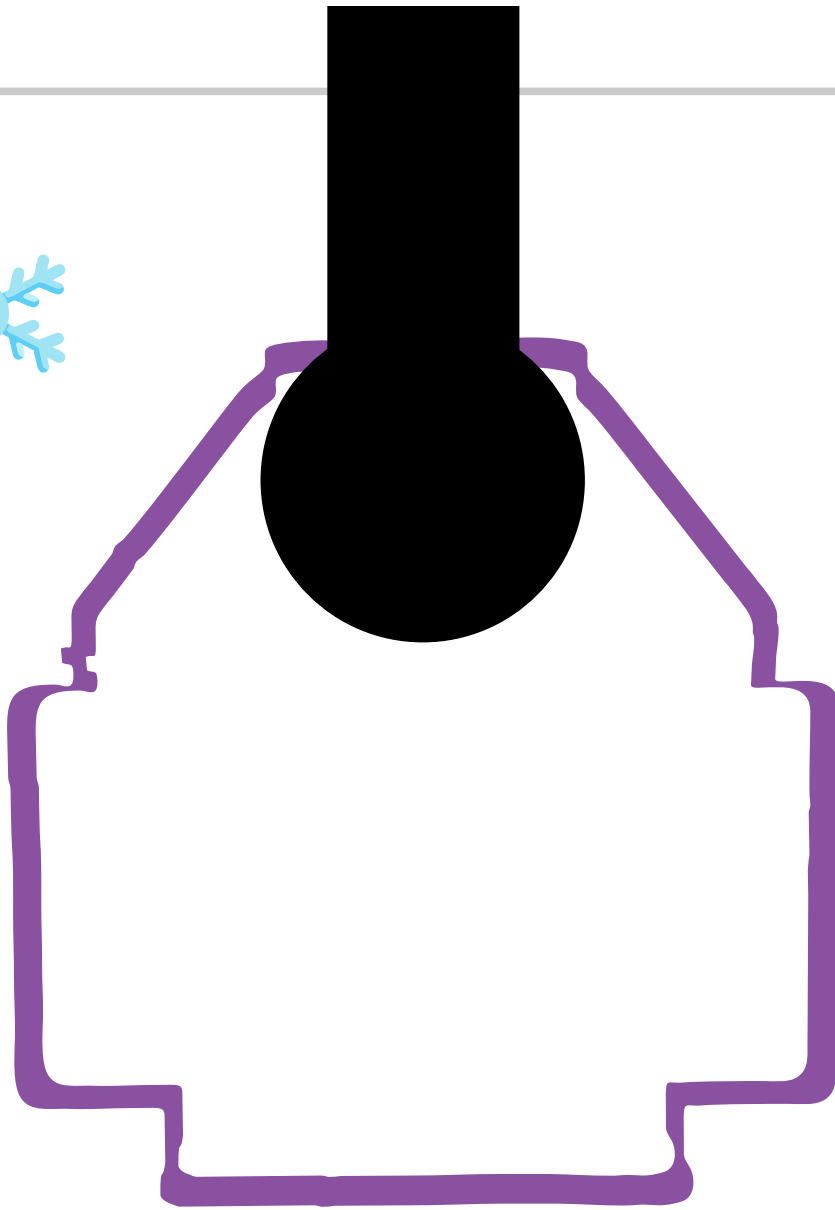






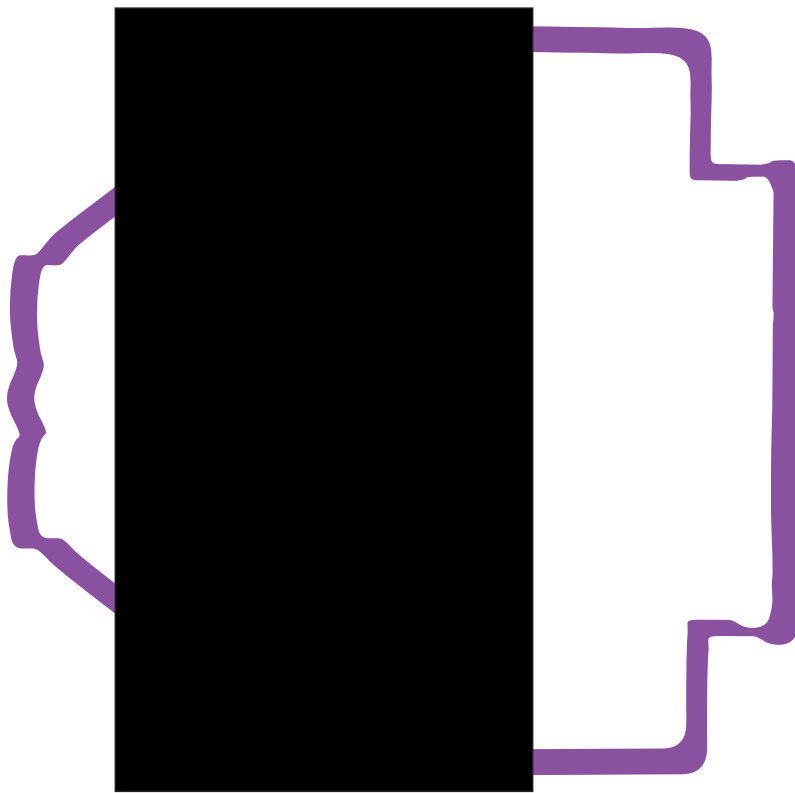




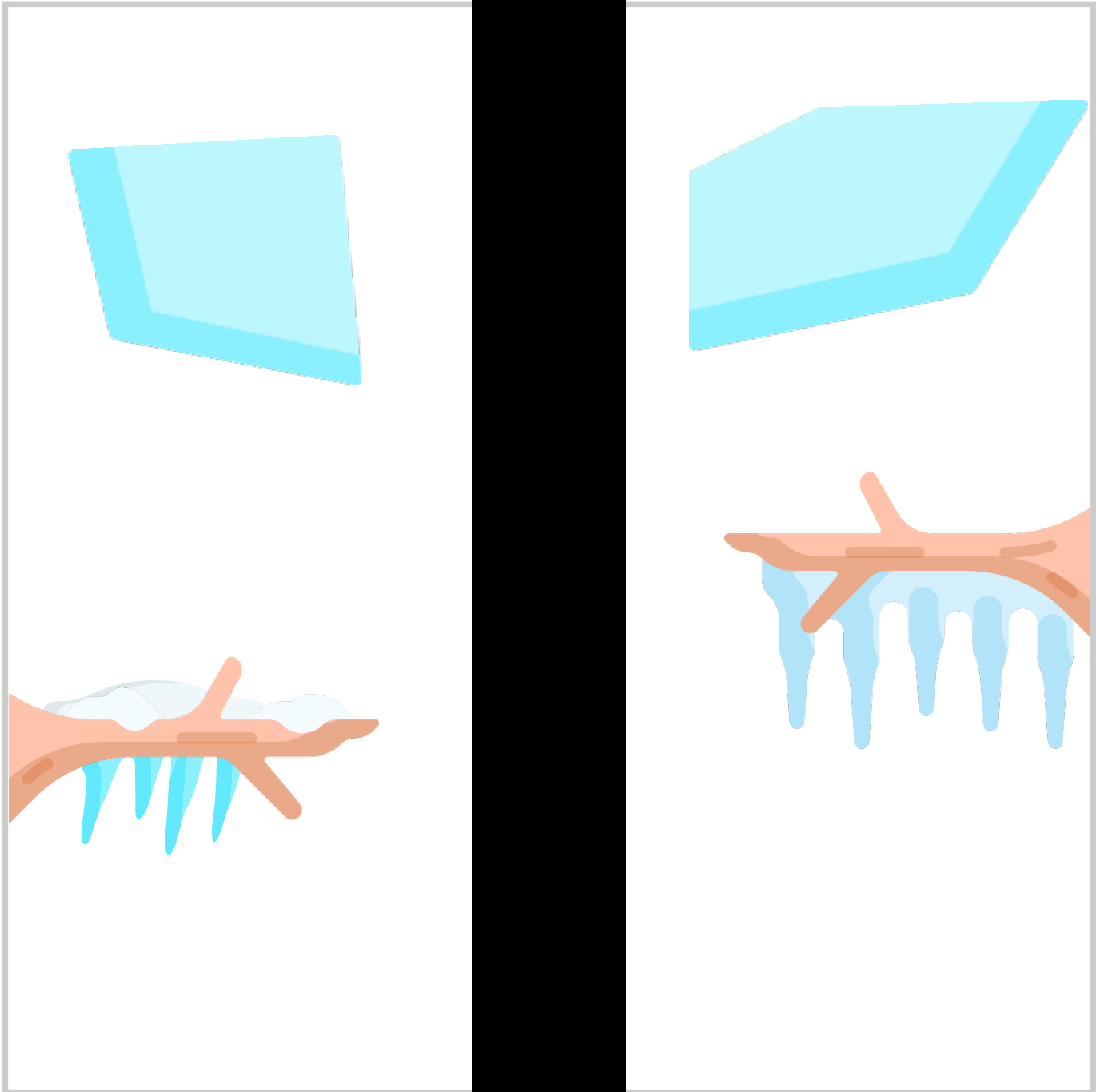
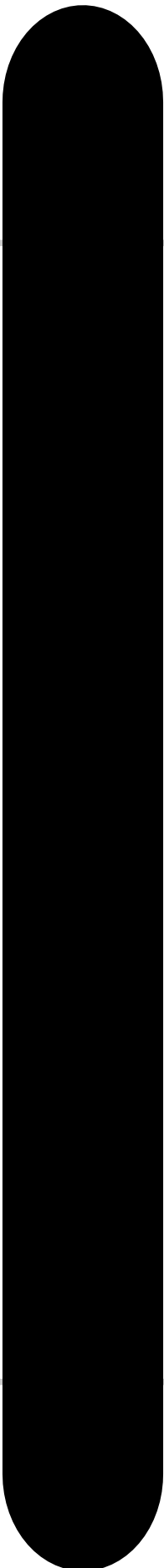


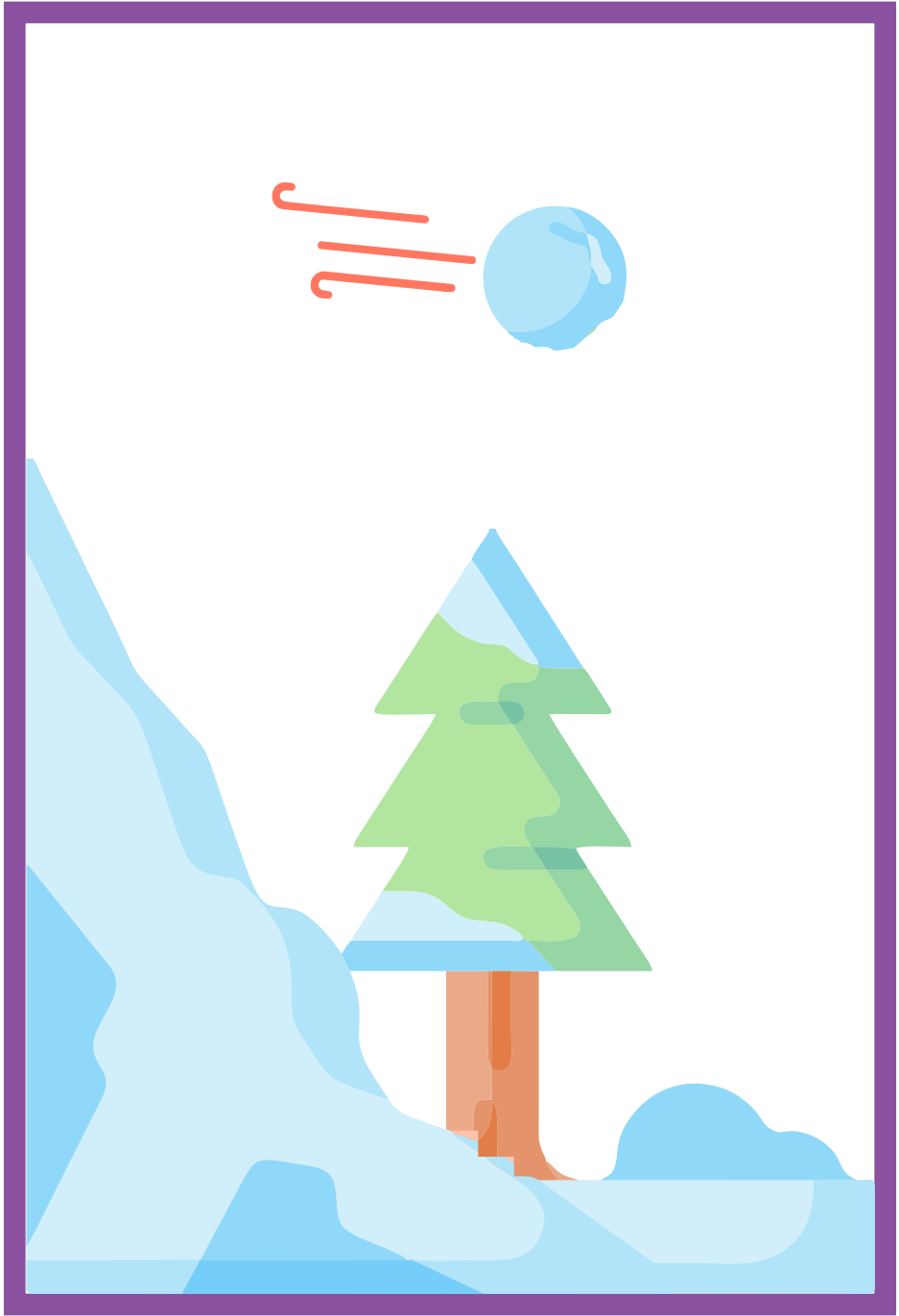
START

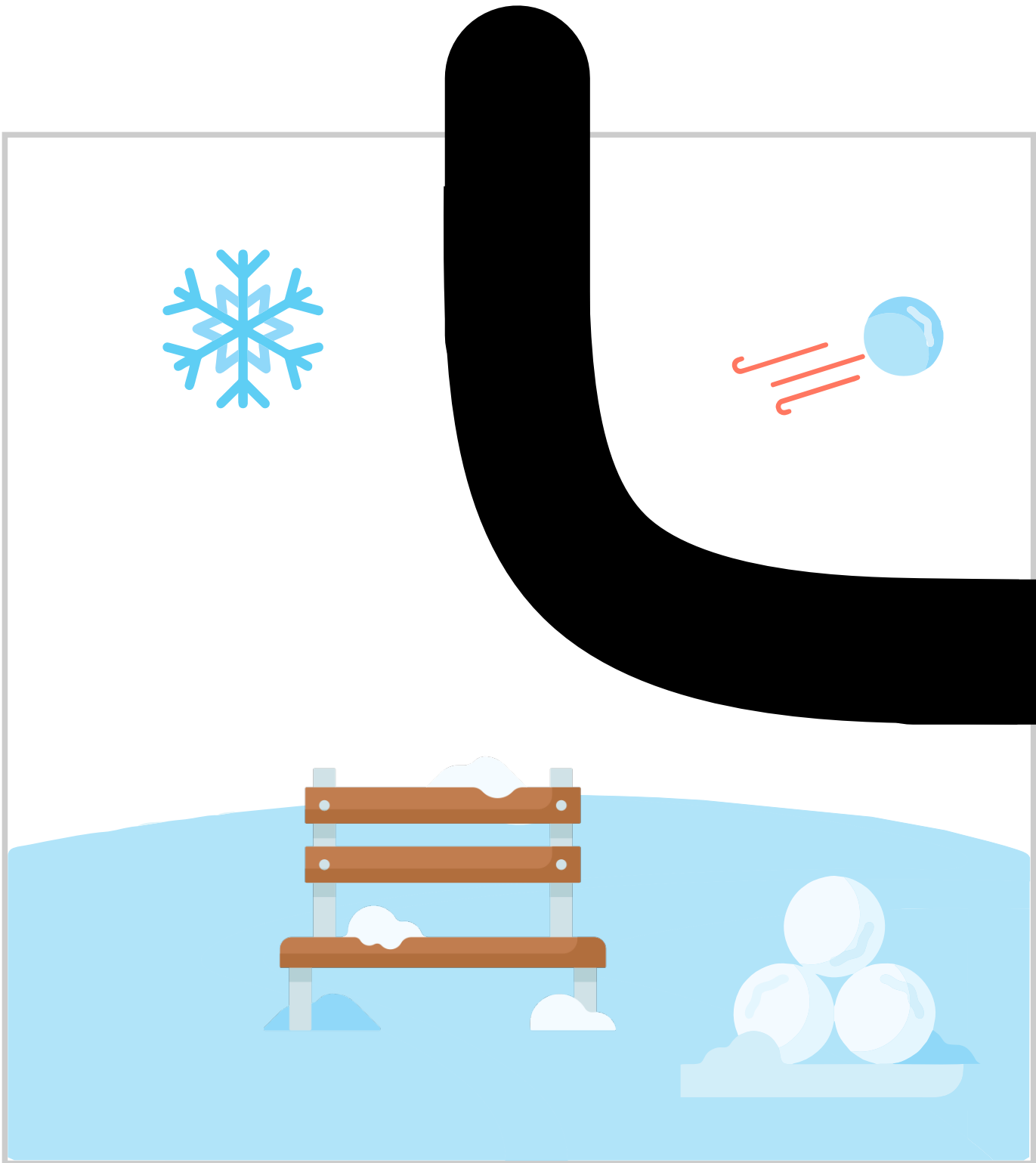
Zona za kalibraciju

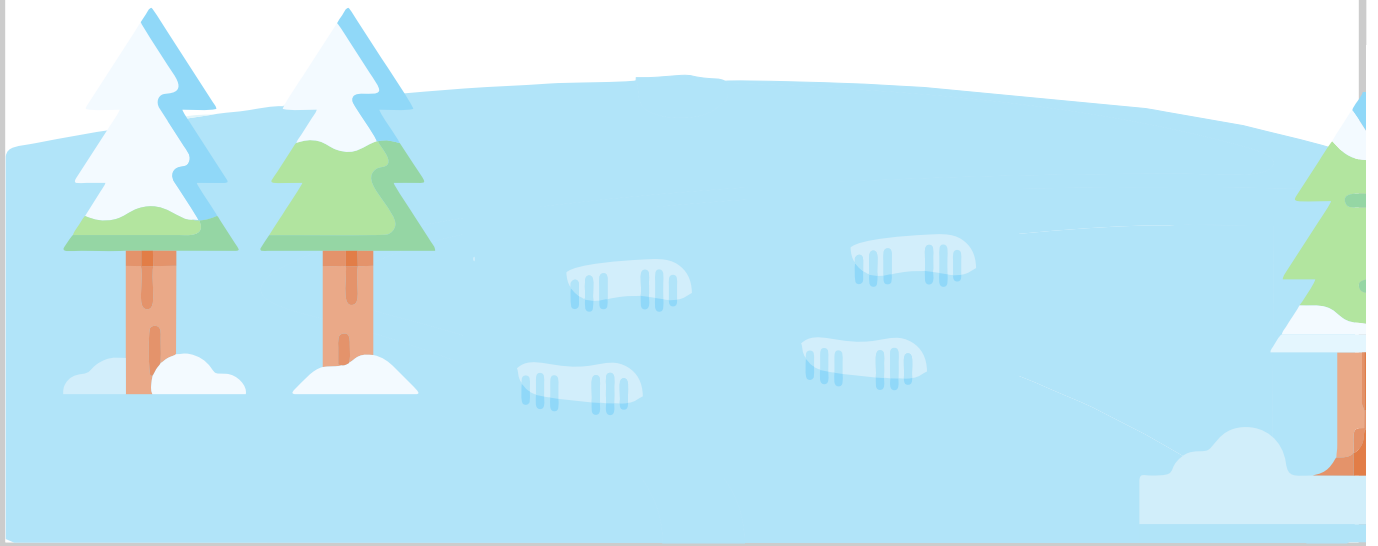
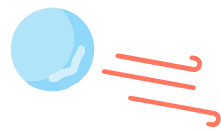


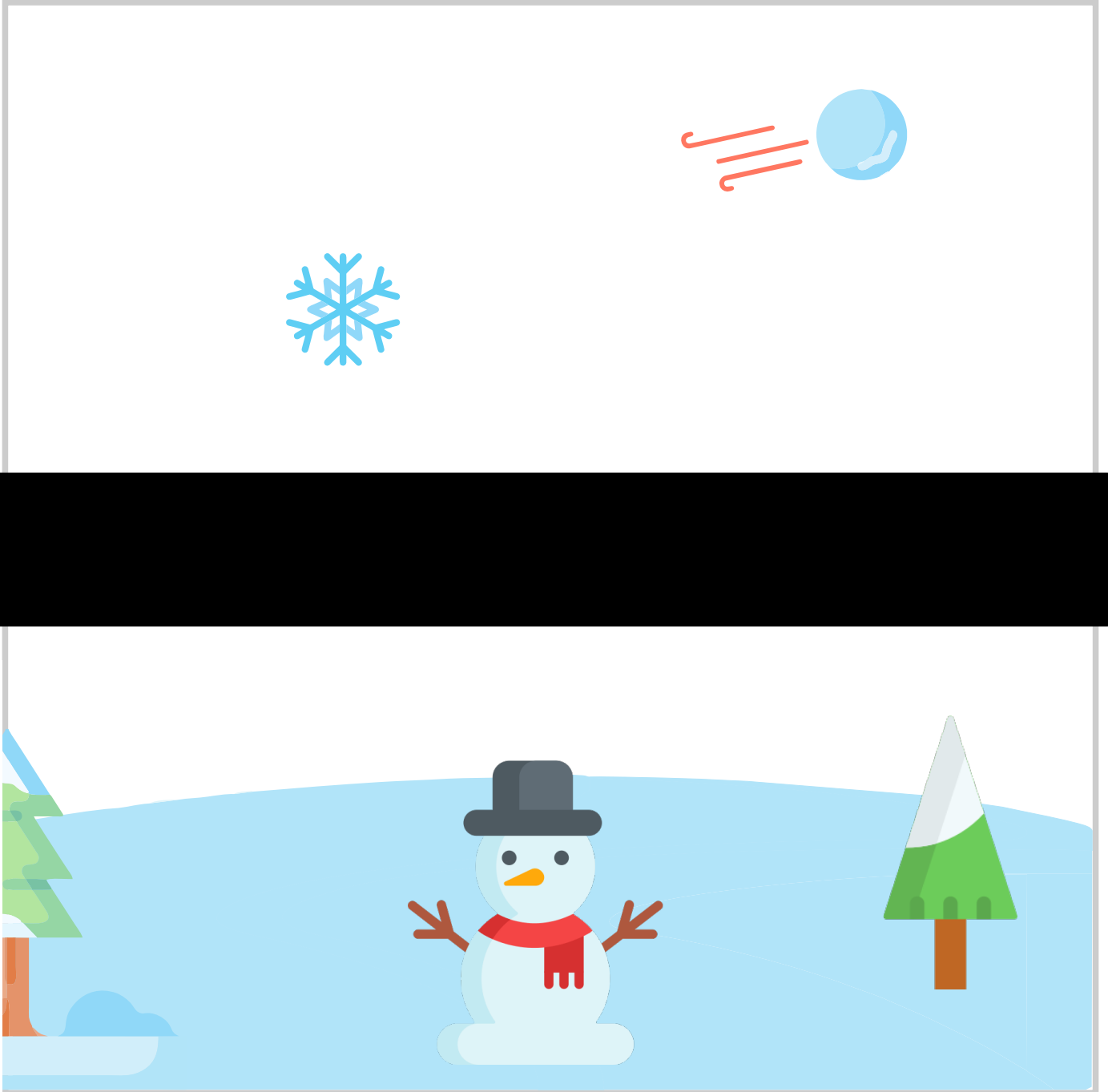
1. Postavite robot tako da je sa svih 5 senzora na crnoj površini.
2. Držite pritisnutu tipku za kalibraciju koja se nalazi s prednje lijeve strane robota oko 1 sekunde.
3. Kada dvije gornje svjetleće diode zatrepere nekoliko puta, kalibracija je gotova.

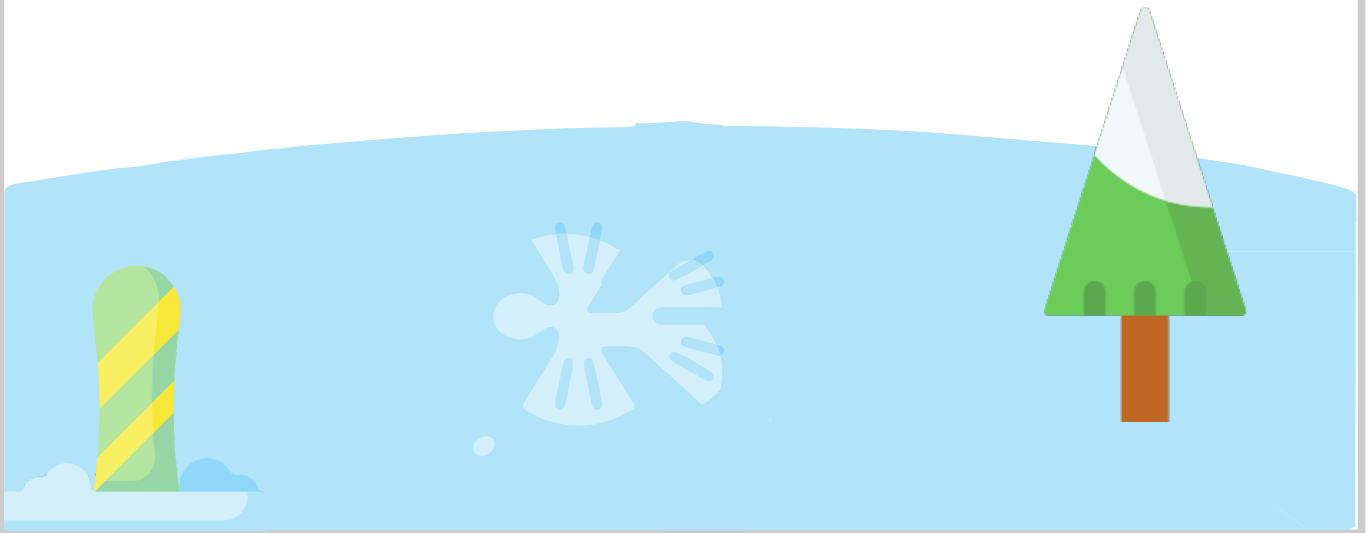
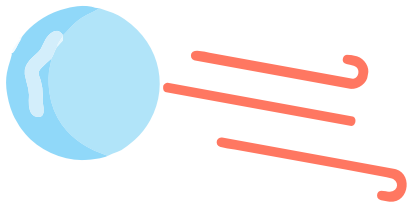


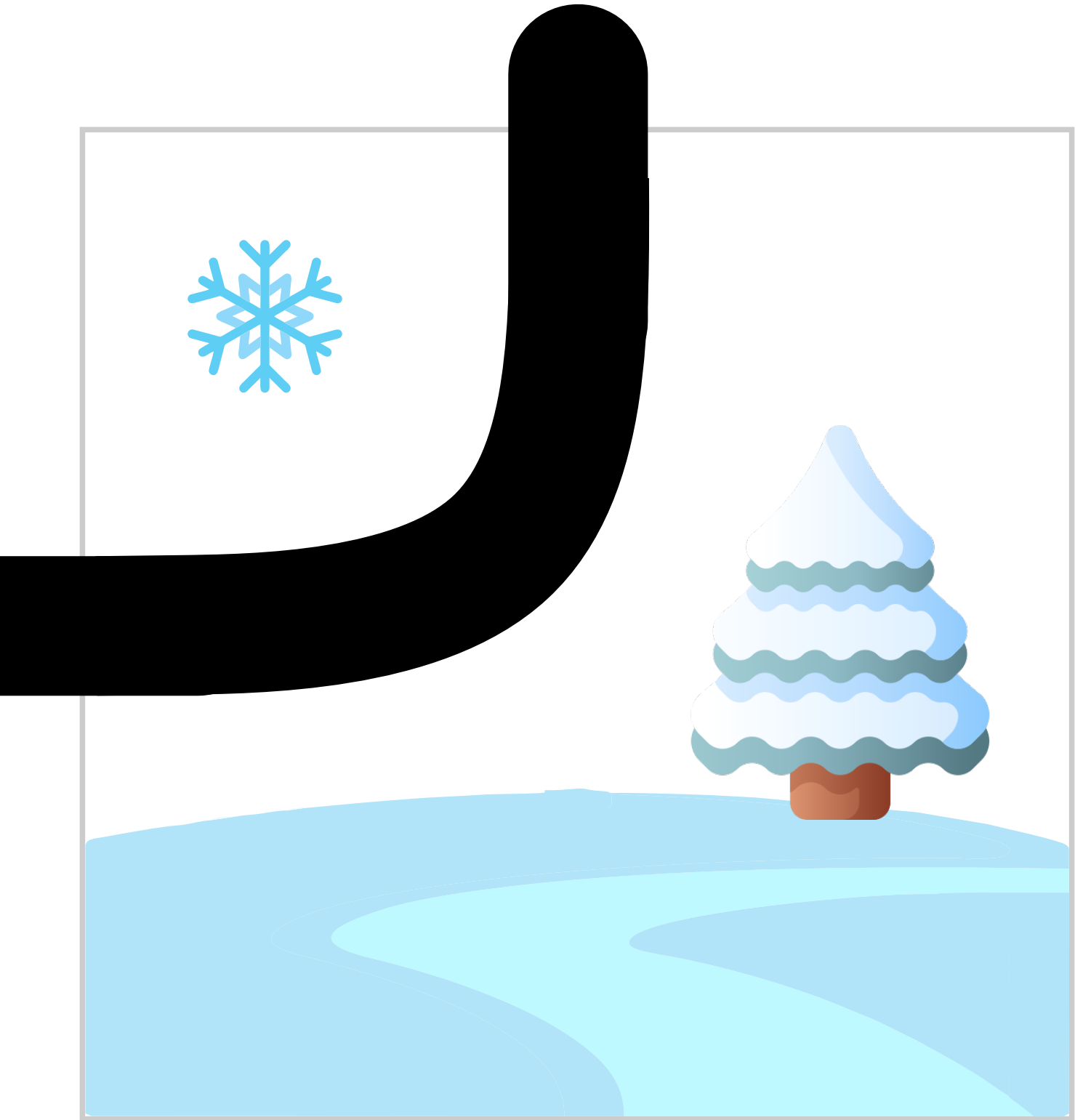










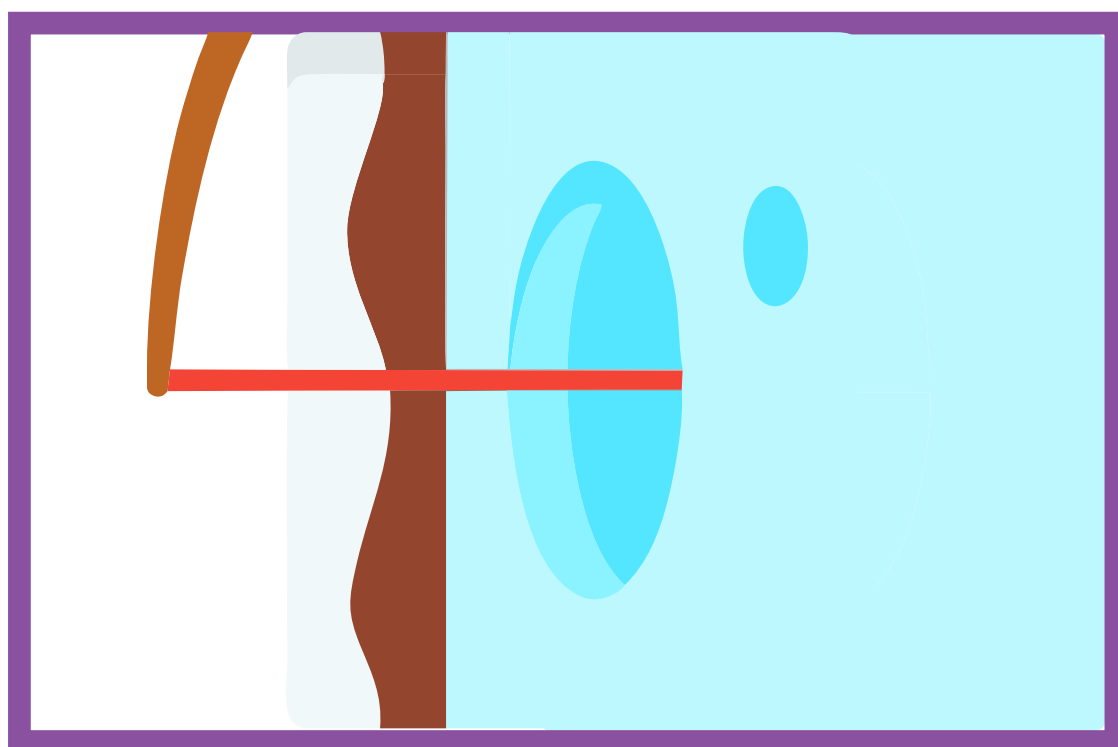
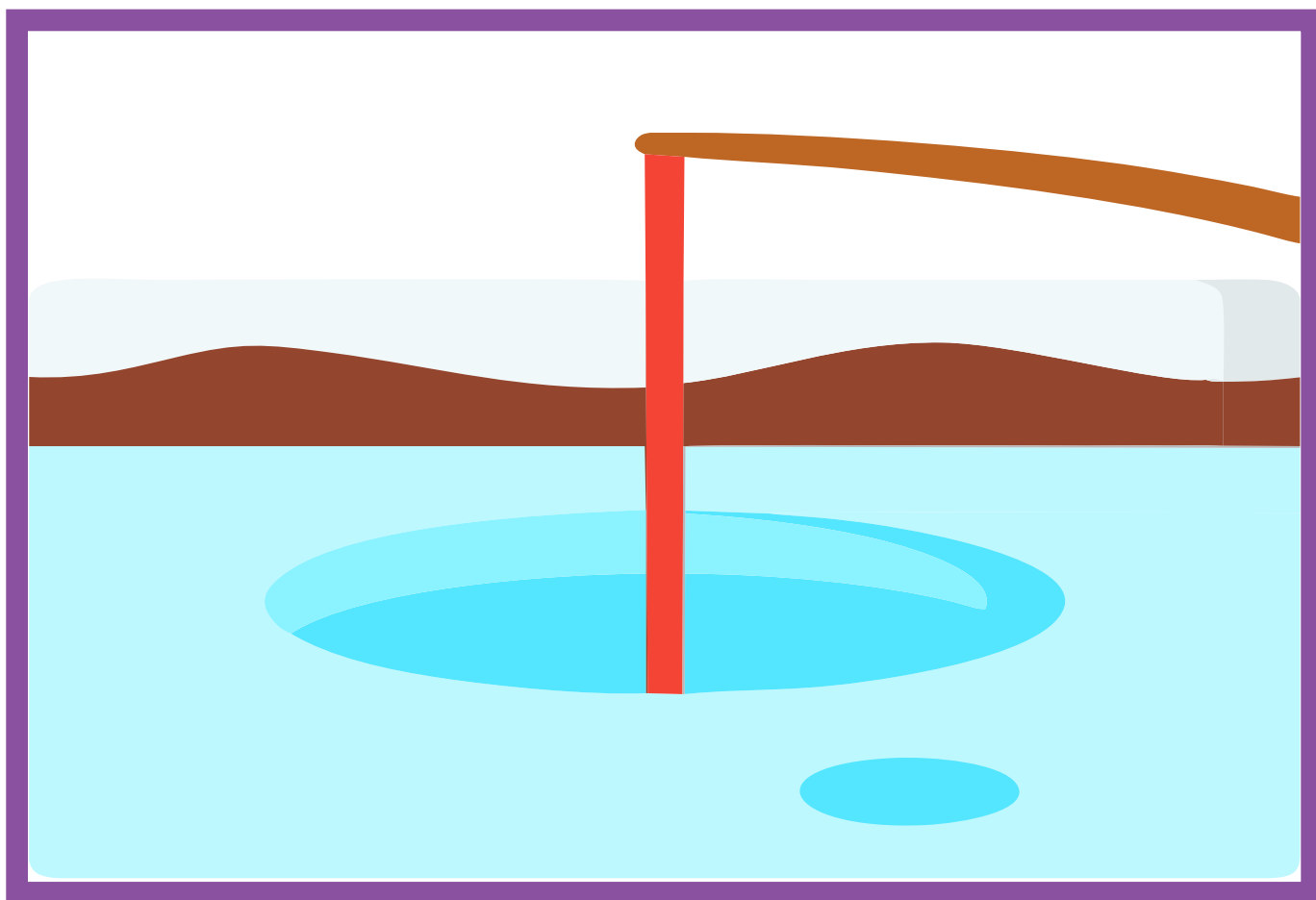




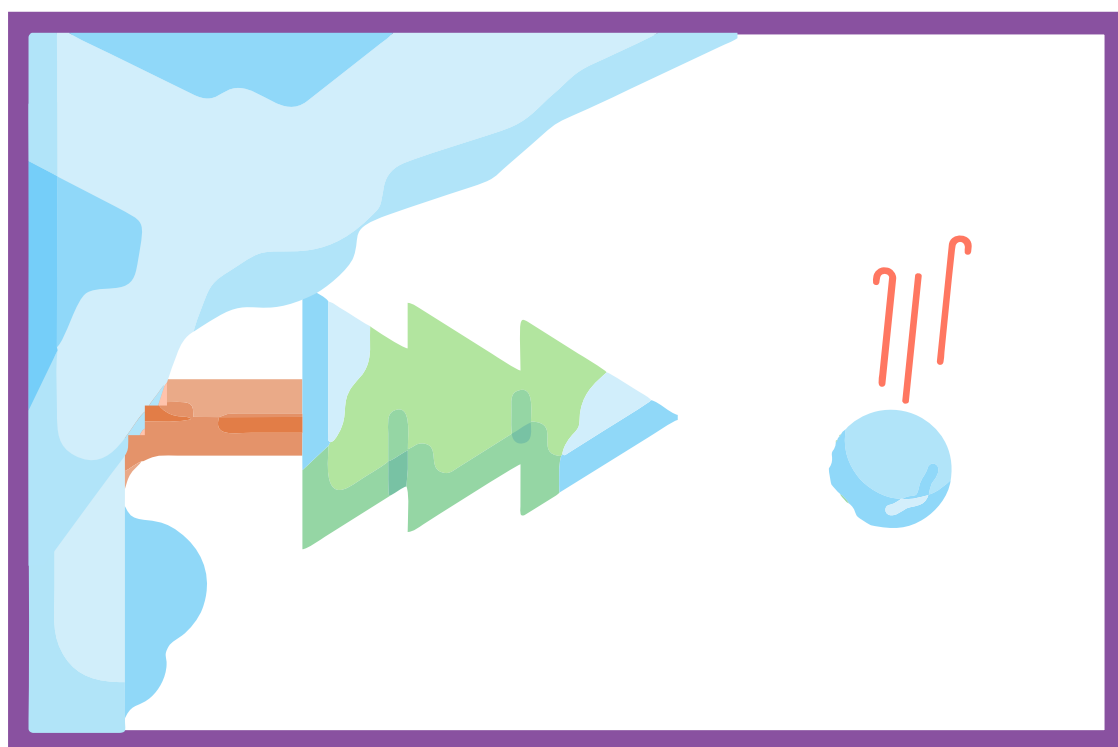
Oznake za kutije - mlađa dobna skupina



Oznake za kutije - starija dobna skupina



Oznake za kutije - starija dobna skupina



Oznake za kutije - mlađa dobna skupina

